

5937

# Stuttgarter Beiträge zur Naturkunde

Herausgegeben vom

Staatlichen Museum für Naturkunde in Stuttgart

Serie A (Biologie), Nr. 265

Stuttgart 1974

## Description of a new *Sarcophaga* species from Southern Africa (Diptera: Sarcophagidae)

By J. P. Reed,

South African Institute for Medical Research, Johannesburg  
Department of Entomology

SMITHSONIAN  
NOV 20 1975  
LIBRARIES

During a visit to Southern Africa in 1970, Professor E. LINDNER collected a number of Diptera which he sent to Dr. ZUMPT for identification. Amongst this material a single specimen of a new species was recognized by Dr. ZUMPT, and as there is little likelihood of further specimens becoming available in the near future, he kindly left it to me to describe.

The terminology used in this paper is explained in ZUMPT's revision of the Sarcophaginae of the Ethiopian zoogeographical region (1972).

### *Sarcophaga namibia* nov. spec. (fig. 1)

This fly belongs to the subgenus *Thyrsocnema*, as recognized by ZUMPT (1972), and the hypopygium closely resembles that of *S. maritima* Engel. The notable difference between the two species is that the cerci of *S. maritima* are strongly undulating when seen in lateral view, while those of *S. namibia* are more or less evenly curved.

The membranal lobi are long, curved and slightly serrated terminally. The vesicae are broad and partially serrated on the outer margin. The harpes are rod-like and serrated and the juxta has a pair of long processi.

**Male** — Head silvery pollinose, frontal stripe black and slightly widened towards the antennal groove. Frons at its narrowest point measuring about  $\frac{1}{2}$  of eye-length, and the parafrontalia at this point about  $\frac{1}{2}$  the width of the frontal stripe. The row of *pa* complete and reaching the middle of the second antennal segment; *iv* long and thick, *f* and *oc* well developed, *ev* not distinguishable from the adjoining *ocb*. Parafrontalia with irregular black setae which extend onto the parafacialia where they become longer and thicker towards the bucca. Height of bucca  $\frac{1}{3}$  of eye-length, vibrissa long and thick, bristles and hairs black but pale on post-bucca. Antennae with basal segments dark-brown, third segment twice as long as the second. Palpi dark-brown to black.

Thorax with a grey pollinosity and the usual pattern of three dark longitudinal stripes. Prescutellar pair of *ac* of moderate length, *dc* = 3 + 4, *ia* = 1 + 3, *prs*

present,  $h = 3$ ; scutellum with four marginal bristles of varying length, the apicals not strongly developed, two pairs of discals present close to the margin of the scutellum;  $st = 1 : 1 : 1$ . Propleuron bare,  $pp$  and  $pst$  well developed and accompanied by hairs. Wing hyaline, epaulet black, basicosta yellow, veins reddish-brown,  $r_{4-5}$  with setae extending  $1/2$  the way to  $r-m$ .

Legs black, fore-tibia with 4  $ad$  in the upper half and one submedian  $pv$  bristle. Mid-femur ventrally with numerous bristles and long hairs. Mid-tibia with 2  $ad$ , 4  $pd$ , 2  $av$  and one  $pv$  bristle, ventral hairs short. Hind-femur with bristles and long hairs. Hind-tibia with several  $ad$  bristles of varying length, 3  $pv$  and 2  $av$  bristles, ventral hairs short.

Abdomen black with a grey pollinosity forming the usual chess-board pattern. Tergite III without a pair of median marginal bristles. Genital segments reddish-brown, the first without stronger bristles near the posterior margin.

Length: 11 mm.

Locality: South West Africa, Walvis Bay, 31.1.1970, 1 ♂, leg. E. LINDNER.

The specimen has been returned to the Natural History Museum, Stuttgart, Germany.

#### References

- ZUMPT, F. (1972): Calliphoridae (Diptera Cyclorrhapha). Part IV: Sarcophaginae. — Explor. Parc natn. Virunga, Miss. G. F. de Witte (1933—1935), fasc. 101, 264 pp.

#### Acknowledgements

I wish to thank Dr. F. ZUMPT, head of the department of Entomology, for supervising my studies on the higher flies. Furthermore, I am indebted to Professor J. H. S. GEAR, Director of the South African Institute for Medical Research, for providing the necessary research facilities, to the South African Medical Research Council for subsidizing the research work in the Department of Entomology and to Mrs. E. A. NESBITT for the illustrations.

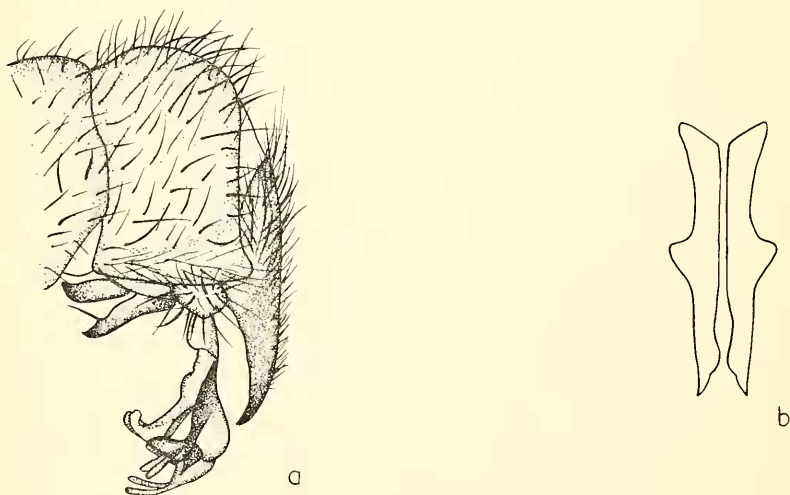


Fig. 1) *Sarcophaga nanibia* n. sp.  
(a) Hypopygium in lateral view,

(b) Outline of cerci dorsally.